



Guangzhou Hessan Woodworking Machinery Co., Ltd

- **HY3200C**
- **MEMBRANE PRESS MACHINE**
- **Project Proposal and Quotation**
 - **2024**



》》》 Company Profile:

Hessan Machinery (Guangzhou) Co., Ltd, located in Shawan Town, Panyu District, Guangzhou City, has been dedicated to the research & development & production of board laminating machine and profile wrapping machine. We launched China's first PUR board laminating line in 2007. With nearly 20 years of hard work, "Hessan" brand has won praise and reputation for its first-class quality and first-class service.

We launched China's first PUR board laminating line in 2007. With nearly 20 years of hard work, "Hessan" brand has won praise and reputation for its first-class quality and first-class service.

· At present, the main products of the company include:

1. PUR standard board laminating production line: suitable for laminating PET film, PVC film, PP film, aluminum film, as well as acrylic sheet, fireproof sheet, aluminum sheet, stone plate and other sheets, providing professional solutions according to customer needs.
2. Board/profile wrapping machine: applicable to various boards, indoor/outdoor profiles surface wrapping, ect.
3. White glue laminating production line: suitable for cold white glue laminates with decorative paper and PVC film.
4. Other production lines: acrylic-PVC composite equipment, PET-PVC film composite equipment, honeycomb door laminating line, flooring laminating line. Membrane Press Machine.
5. Other supporting equipment: automatic board loading/unloading machine, turnover machine, sanding machine, dust removal machine, pearl cotton laying machine, PVC slitting machine, glue hot melt machine, etc.



》》》 EQUIPMENT PRESENTATION

This machine can be used to paste PVC,ABS,etc film on furniture,cabinets,loudspeakers, reliefdoors,decoration panels for walls and other abnormal decoration shapes with a special silicon sheet.

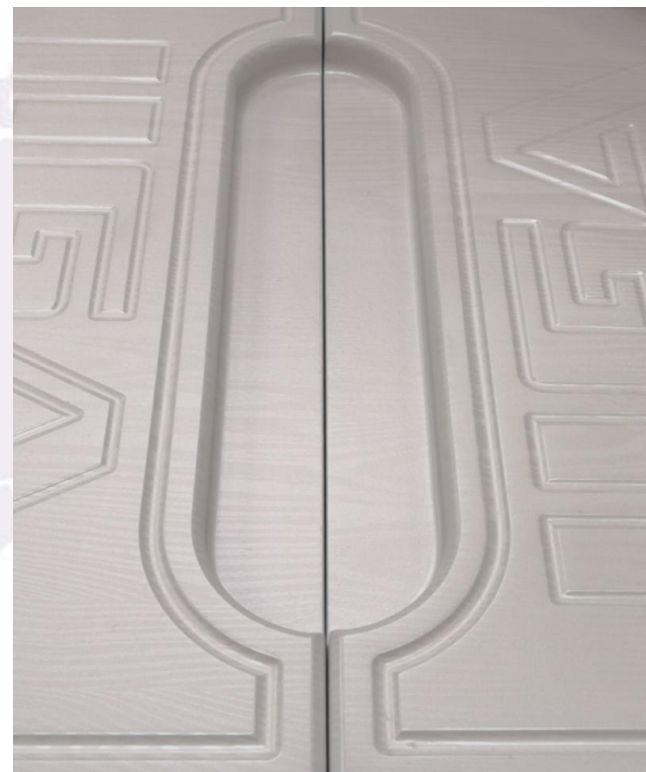
》》》 FEATURES

- ◆ The electrical part is fully automatic and digitalized control,the components produced by famous enterprises with top quality.
- ◆ Heat transfer oil heating system and high quality heat preservation material can ensure even heating and energy saving.
- ◆ The integrated movement electromotor produces less noise and seldom breaks down.
- ◆ Adopt Germany Becker vacuum pump,which are stable and reliable with simple maintenance work.it is quick to pump out,with lower trouble rate;it has ultra-large gas tank with double air channels to flow through,large amount of the ventilation and huge explosive force.
- ◆ Main components are produced by numerical control machining center to ensure its high precision.
- ◆ -The racks are all composed of manganese steel plate,the whole frame is reasonable,can support 500 tons of pressure.
- ◆ The heating system adopts the heat conduction oil for heating circularly,the temperature is even,and machine has the bottom heating,can enable the product to achieve an ideal effect.
- ◆ Control system adopts JP Omron PLC,Operated by man-machine interface,the automation degree is high,has four working modes,can adapt for different workpieces.
- ◆ We promise the perfect quality,the maintains for one year,momentarily provide the technical support and the professional training.

(Working site)



» » » **SAMPLE DISPLAY**



HY3200C

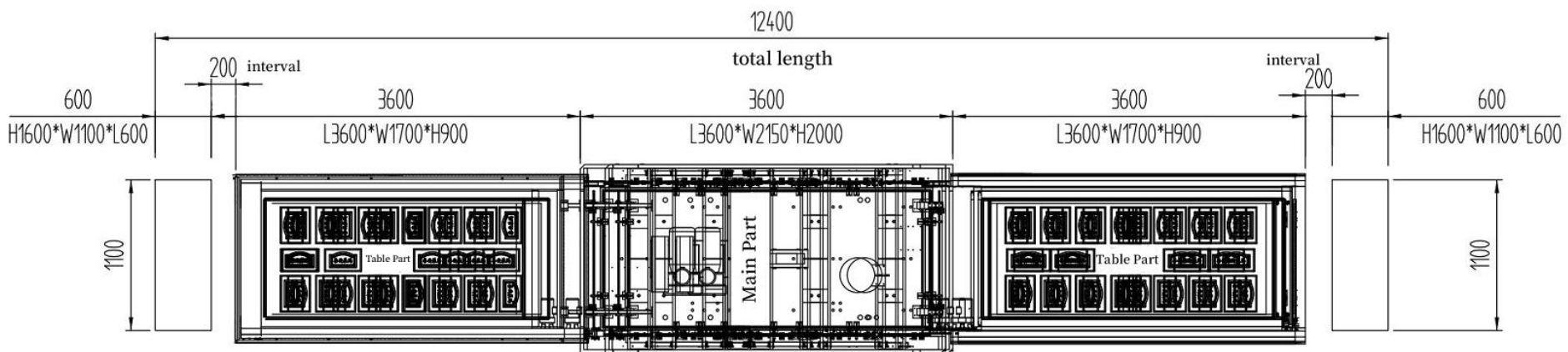
MEMBRANE PRESS MACHINE



» » » TECHNICAL PARAMETERS

- ◆ - Outside size: 12000x2150x 2250mm
- ◆ - Table size : 3000 x1320x50 mm(INNER SIZE)
- ◆ - Working size : 3000 x1300x40 mm
- ◆ - Working Voltage : 380V/50Hz or Basis on client country
- ◆ - Negative(-) pressure: 0~0.095mpa
- ◆ - Positive(+) pressure: 0.5~0.6mpa
- ◆ - Membrane pressure: 0.3~0.5mpa
- ◆ - Oil pressure: 10mpa (low press: 4 top P25kw)
- ◆ - Working Speed : 2~4 min/1 time
- ◆ - Maximum processing high: 50mm
- ◆ - Central supply system: >1 M3
- ◆ - Pressure of supply system: >0.5 M3
- ◆ - Total power: 52.6kw (half power after running)
- ◆ - Top heating: 25.2kw (half power after running)
- ◆ - Under heating: 14.4kw (half power after running)
- ◆ - Conducting oil pump: 0.4kw
- ◆ - Hydraulic station: Integrated System
- ◆ - Vacuum pump: # 100
- ◆ - Control system: PLC (OMRON)
- ◆ - Temperature control: Temperature controller set temperature
- ◆ - Heater system: oil heater system
- ◆ - Total weight: 16000kgs

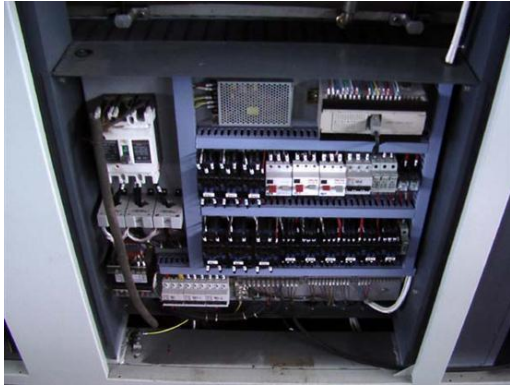
Unit:mm



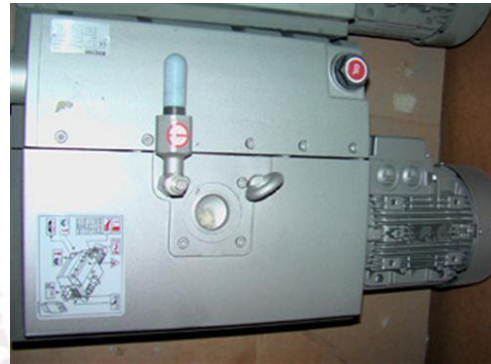
Price list:

No.	Item name	Spcs	QTY	UNIT	Price (USD)	Remark
1	HY3200C	3000mm	1	SET	USD75,000	<p>1.Price term: <u>FOB</u> <u>Guangzhou</u></p> <p>2.Payment: <u>T/T 30% deposit</u> <u>and 70%</u> <u>balance should</u> <u>be paid before</u> <u>loading.</u></p> <p>3.Packing: <u>Plastic film</u></p> <p>4.Time of delivery: <u>6 weeks after</u> <u>confirm the</u> <u>deposit received.</u></p>

» » » Electrical control cabinet



» » » Vacuum pump (BECKER 100)



» » » Non welding fra mework



» » » FUNCTION

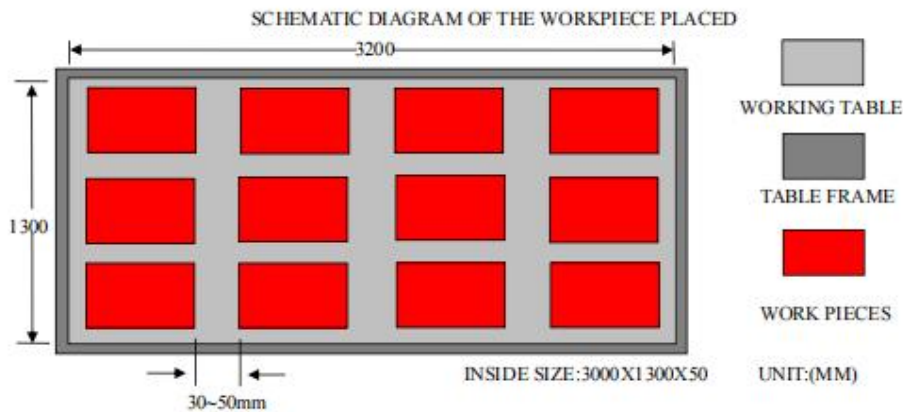
- ◆ -only function 4 have to uninstall silicon,function 3 only use silicon to heating film.
- ◆ - Function 1 normal and fastest. - Function 2 suitable for small part pvc
- ◆ - Function 3 best for silicon.special Function 3 model 2.- Function 4 suitable in hot place

	MODEL	SUI FILM	HEATING MODE	PRESSURE MODE	MAX PRESSURE
Function 1	Working 1	Matt finish	PVC touch silicon	Silicon press	Max 4kg/cm2
	Working 2	High glossy	PVC touch silicon	Silicon press	Max 4kg/cm2
Function 1	Working 1	High glossy	PVC no move	Silicon press	Max 4kg/cm2
	Working 2	Matt finish	PVC no move	Silicon press	Max 4kg/cm2
Function 1	Working 1	Matt finish	PVC touch silicon	Air pressure	Max 5kg/cm2
	Working 2	High glossy	PVC no move	Air pressure	Max 5kg/cm2
Function 1	Working 1	Matt finish	PVC touch top heat board	Air pressure	Max 7kg/cm2
	Working 2	High glossy	PVC no move	Air pressure	Max 7kg/cm2

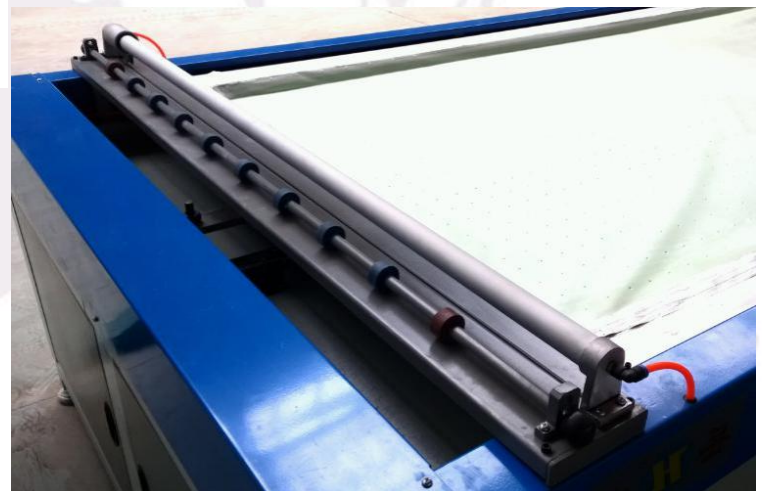
》》》 DAILY OUTPUT CALCULATION

According to the fact that the dimension of the working table is 2600x1300mm, the dimension of your products is not only one or two type size, and the space between the work piece is 50mm, therefore, the placing layout is as follows:

The working table can be place with 12 work pieces, (for example) 5min per filming, 22 hours/day for 2 shifts a day, so the daily output of one machine is: $12\text{pcs} \times (60\text{min}/6) \times 22\text{hours} = 2640\text{pcs}$. The calculation method is the same for the work pieces with pieces with different dimensions, thus the daily output can be calculated easily.



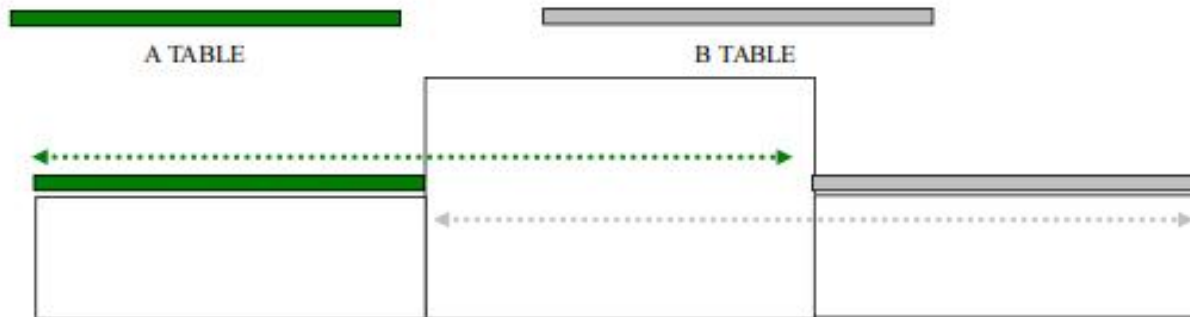
》》》 PVC cutting system



» » » WORKING TABLE MODEL

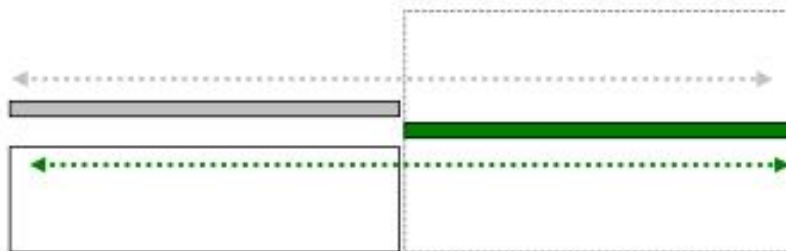
MODEL 1 (CLASSIC)

TWO HEAD TWO TABLE TWO SIDE MOVE



MODEL 2 (ECONOMY)

ONE HEAD TWO TABLE TWO SIDE MOVE



USUALLY, IF JUST WORKING FOR DOOR ETC PRODUCT, SUGGEST USE ECONOMY MODEL, THIS ONE BETTER BECAUSE SMALLER AREA NEEDS, AND POSSIBLE SAVE WORKER AND WORKING TIME.

BUT IF THE TIME OF PREPARATION NEED VERY LONG TIME, TOO MUCH LONGER THAN THE LAMINATING TIME, WILL BE NOT SUGGEST, CUZ AFTER THE LAMINATING ON PRODUCT WITH PVC OR OTHER FILM, IF KEEP HEATING IN HEATING ROOM WITH HIGH TEMPERATURE, WILL BE NO GOOD FOR PVC SHINING AND COLOR.

» » » EQUIPMENT COMPONENTS QUOTATION

ITEM NUMBER	NAME	MANUFACTURER'S NAME	DESCRIPTION
METER			
1	YXCH100-1	VACUUM METER	SHUANGHUA DISPLAY VACUUM PRESSURE
2	YXCH1.6MPA	HYDRAULIC METER	SHUANGHUA HYDRAULIC PRESSURE DISPLAY
3	YXCH100-1V	AIR PRESSURE METER	SHUANGHUA DISPLAY AIR PRESSURE
VALVE / PUMP / MOTOR			
4	WD-10	OIL HEATING PUMP	ALL LANK 220V50HZ/60HZ
5	DBW10B	ELECTROMAGNETIC SPILL VALVE	DEKEMA 220V50HZ/60HZ
6	4WE10 D	ELECTROMAGNETIC SPILL VALVE	DEKEMA 220V50HZ/60HZ
7	PV2R2	VANE PUMP	DEKEMA 220V50HZ/60H
8	MCY14-1B	AXIAL PISTON PUMP	XINGDA 31.5MPA 1500R/MIN 25ML/R
9	DF-B10K	CHECK VALVE	CHAOYUE
10	DFY-B20Y2	CHECK VALVE	CHAOYUE
11	YX390L-4	MOTOR	HENGLI 1.5KW
12	YX3100L2-4	MOTOR	HENGLI 3KW
13	U 4.70SA/K-58	VACUUM PUMP	BECKER 220V50/60HZ 1.85KW 3BAR

ELECTRICAL

13	CP1E-NO6	PLC	OMRON	100-240V AC 50/60HZ 70VA
14	NB5Q-TW00B	TOUCH SCREEN	OMRON	DC24V 6W
15	LC1E1810M5N	CONTACTOR	SCHNEIDER	220V50HZ 7.5KW
16	LC1E3210M5N	CONTACTOR	SCHNEIDER	220V50HZ/60HZ 15KW/380V
17	LC1E2510M5N	CONTACTOR	SCHNEIDER	220V50HZ/60HZ 11KW/380V
18	LC1E0910M5N	CONTACTOR	SCHNEIDER	220V50HZ/60HZ 4KW/380V
19	ZB2 BZ102C	CONTROL SWITCH	SCHNEIDER	8C15143112
20	ZB2 B554C	CONTROL SWITCH	SCHNEIDER	WH15133313
21	ZB2 BA3C	CONTROL SWITCH	SCHNEIDER	WH14125222
22	LMK(B1)-0.66	CURRENT TRANSFORMER	DELIXI	Standard: GB1208 (MC)
23	DZ108-20	CASE CIRCUIT BREAKER	DELIXI	Standard: GB14048.2 IEC 60947-2
24	DZ108-32	CASE CIRCUIT BREAKER	DELIXI	Standard: GB14048.2 IEC 60947-2
25	DZ108-63	CASE CIRCUIT BREAKER	DELIXI	Standard: GB14048.2 IEC 60947-2
26	RT18	CYLINDER CAP FUSE	DELIXI	Standard: GB13539
27	85L1	ELECTRICAL MEASURING INSTRUMENT	DELIXI	Standard: GB/T 7676
28	XMT	TEMPERATURE CONTROLLER	C-LIN	AC220V+10% 50-60HZ<3W
29	CJX2	AC CONTATOR	C-LIN	Standard: GB14048.4 GB21518-2008 IEC60947-4-1
30	DZ108-20	LOW VOLTAGE CIRCUIT BREAKER	SAIDE	Standard: GB14048.2
31	ST-503A	ELECTROSTATIC PRECIPITATOR	ST	0.36mA/M -10~50c Airflow rate: 10m/sec
32	TM2680	SILICON MEMBRANE	MEMBRANE STEINBACH AG/HANJIN	GERMANY/KOREA



Looking forward to cooperate with you!

- Guangzhou Hessan Woodworking Machinery Co., Ltd
- Address: No.924 Shiliang Road, Panyu District, Guangzhou City, China
- Hotline: 86-20-34835968
- Fax: 86-20-34835982
- After-sales: 86-20-34835981
- E-mail: info@gzhessan.com.cn
- <http://m.qiyeku.cn/heyuan/index.html> (China website)
- www.hessan-mc.com.cn (Website)
- Alibaba International Website : <https://gzshunen.en.alibaba.com/>
- 抖音号: Hessan008 【 顺恩PUR贴面设备 (合源机械) 】
- Wechat video number : 合源机械Hessan



↑ [Chinese website.](#) [English website.](#) ↑